



MICHAEL HODGSON

estate agents & chartered surveyors





## SHAFTSBURY PARK, HOUGHTON LE SPRING £850 Per Month

Available Now – Stunning Four Bed Detached House – Sought After Location

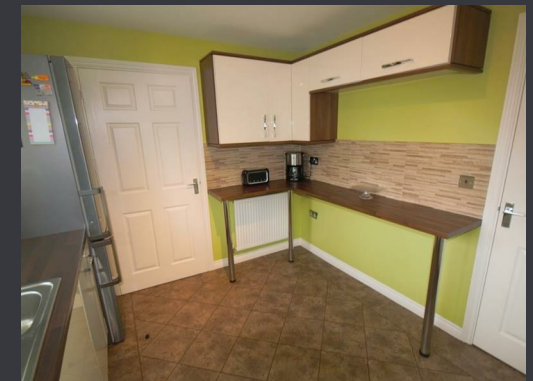
We are delighted to offer this beautiful, very well presented, four bed detached house situated on Shaftsbury Park, Hetton-le-Hole. This family home is immaculate throughout and will undoubtedly appeal to all. Close to all amenities and travel links, easy access to A1m/A690 and The Rainton Bridge Business Park. Hetton-le-Hole is equidistant between Durham and Sunderland, fifteen minutes' drive to either. Hetton Primary and Secondary Schools are both within a few minutes' walk. Viewing is highly recommended.

Available now on an unfurnished basis.

Weekend and evening viewings available.

Satisfactory references required without exception.

Sorry no pets



SHAFTSBURY PARK, HOUGHTON LE SPRING

£850 Per Month

---

Living Room  
13'5" x 13'1"  
Spacious and light, neutral décor and carpet. Bay window to front.  
Open access to dining room

Dining Room  
8'10" x 7'10"  
With double doors leading to the garden. Neutral décor and carpet

Kitchen  
11'5" x 8'10"  
Stunning, fully fitted modern kitchen with built in stainless steel oven and gas hob. Tiled splashback. Ample surface and storage space. Breakfast bar and quality Karndean flooring make this a desirable space for both families and entertaining

Utility  
5'10" x 4'11"  
Modern fitted utility with plumbing for washing machine. Additional space for dryer. Karndean flooring

WC  
With low level w/c, hand basin, chrome heated towel rail and Karndean flooring

First Floor  
Neutral décor and plain carpet. Access to all first floor rooms

Bedroom 1  
9'10" x 9'2"  
With full length sliding wardrobes, neutral décor and plain carpet.  
Leading to....

En Suite  
Beautiful en suite with a quality power shower, low level w/c, hand basin and Karndean floor

Bedroom 2  
9'6" x 9'2"  
Neutral décor, plain carpet and full length sliding wardrobes

Bedroom 3  
13'5" x 8'6"  
Spacious bedroom with neutral decor and carpet. Sliding wardrobes

Bedroom 4  
8'6" x 8'6"  
Ideal fourth bedroom or home office. Neutral décor and carpet

Bathroom  
With modern white suite including bath with shower attachment, low level w/c, hand basin and Karndean floor  
Integral Garage: Single garage space with lights and electric points

Garage  
Integral garage

Externally  
Externally there is a front garden and driveway and a rear garden with a lovely, well maintained and enclosed garden with raised, decked area

# M I C H A E L   H O D G S O N

---

estate agents & chartered surveyors

Michael Hodgson Chartered Surveyors for themselves and for the vendor(s) of this property whose agents they are, give notice that: 1 The particulars do not constitute any part of an offer or contract. 2. None of the statements contained in these paragraphs as to the properties are to be relied on as statements of representations of fact. 3. Any intending purchaser must satisfy himself or herself by inspection or otherwise as to the correctness of each statements contained in these particulars. 4. The vendor(s) or lessor(s) do not make or give and neither Michael Hodgson Chartered Surveyors nor any person in their employment has authority to make or give, any representation or warranty whatsoever in relation to this property. 5. None of the buildings services or service installation (whether these be the specific responsibility of the freeholder, lessor or lessee) have been tested and is not warranted to be in working order. Nothing in these particulars should be deemed to be a statement that they are in good working order or that the property is in good structural condition or otherwise. 6. It should not be assumed that the property has all necessary planning, building regulations or other consents. 7. Lease details, service charges and ground rent (where applicable) are given as a guide only and should be checked and confirmed by your solicitor prior to exchange of contracts. 8. The copyright of all details and photographs remain exclusive to Michael Hodgson. 9. The particulars are set out for general guidance only for the intending Purchasers and do not constitute part of an offer or contract. Whilst we endeavour to make our sales particulars accurate and reliable, if there is anything of particular importance which you feel may influence your decision to purchase, please contact the office and we will be pleased to check the information. Do so particularly, if contemplating travelling some distance to view the property. 10. All descriptions, dimensions, references to conditions and necessary permissions for use and occupation and other details are given in good faith, and are believed to be correct, however any intending purchasers should not rely on them that statements are representations of fact, but must satisfy themselves by inspection or otherwise as to the correctness of each of them. Independent property size verification is recommended.

4 ATHENAEUM STREET, SUNDERLAND, SR1 1QX

---

0191 5657000

[www.michaelhodgson.co.uk](http://www.michaelhodgson.co.uk)

